

ORLANDO

Santiago Cely

Manager Empresa Férrea Regional EFR



3105614462



orlando.santiago@efr-cundinamarca.gov.co



@orlandosantiagocely



Orlando Santiago



@OrlandoSantiagC



“

Currently leading the Empresa Férrea Regional, he is in charge of the Regiotram de Occidente and Regiotram del Norte projects, Colombia's first two commuter train lines, as well as the extension of the TransMilenio trunk line in Soacha

”

He has **over 20 years of experience** working with national, district, and departmental government entities on transportation and mobility infrastructure projects. His most recent role was as the **General Manager of TRANSMILENIO S.A.**, where he was responsible for managing the resources allocated for the development of new trunk infrastructure, in addition to overseeing the technical and operational decisions for Bogotá's Integrated Public Transport System and the Soacha Trunk Line.

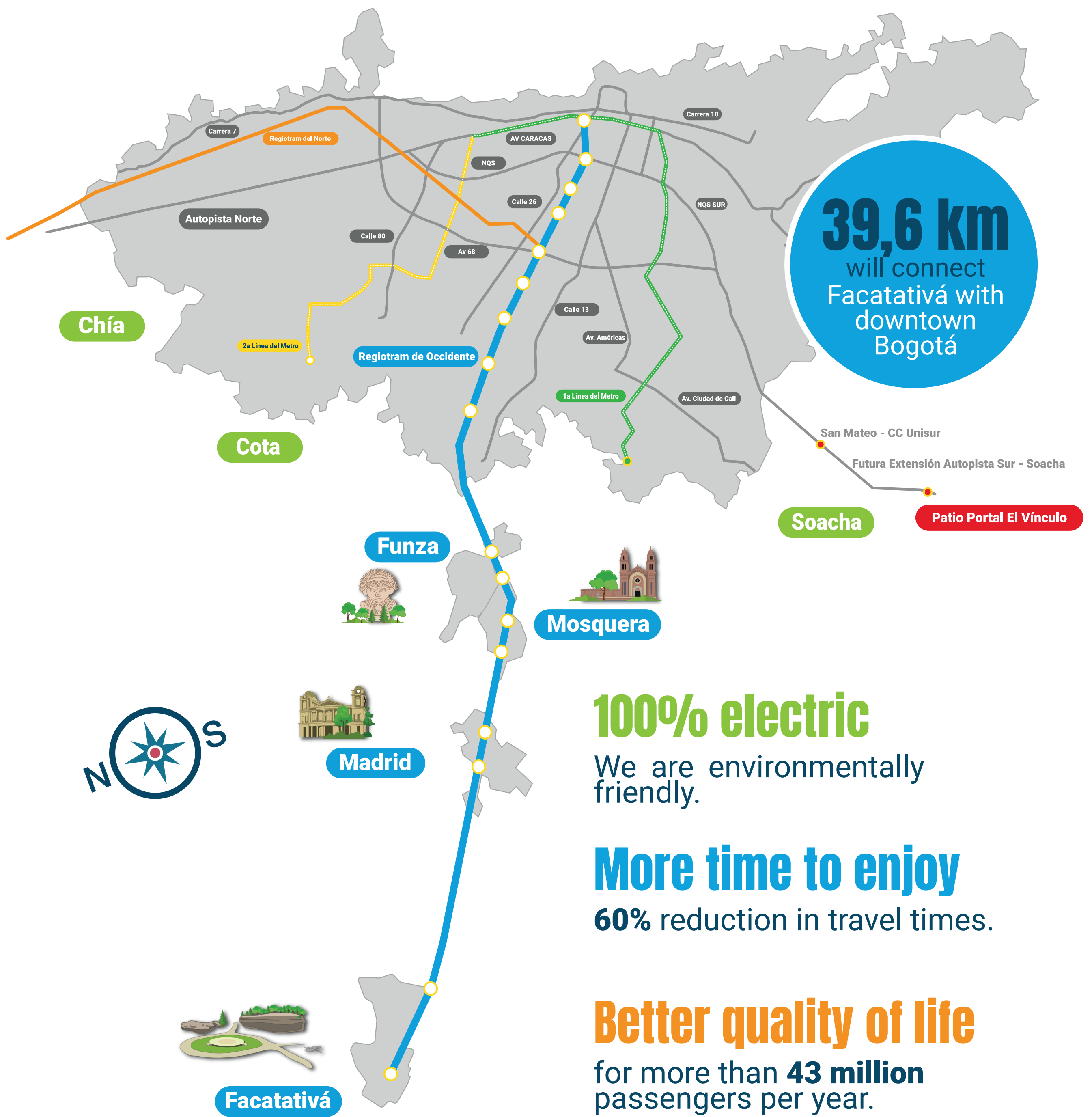
About US?

Empresa Férrea Regional S.A.S. – EFR is the managing entity of the Regiotram de Occidente and Regiotram del Norte projects, as well as the construction of Phases II and III of the TransMilenio NQS Trunk Extension to the municipality of Soacha. We represent a development initiative for the department of Cundinamarca, bringing it closer to modernity, innovation, and sustainable comprehensive development, with the goal of ensuring greater competitiveness and improving mobility conditions and the well-being of the 11 million people living in this city-region.



Regiotram de Occidente

We are revolutionizing mobility by connecting Sabana Occidente with Bogotá, through a modern and efficient transportation system that enhances the quality of life in the region.



100% electric

We are environmentally friendly.

More time to enjoy

60% reduction in travel times.

Better quality of life

for more than **43 million** passengers per year.

El Corzo workshop:



ANI workshop:



17 Stations



16 Trains



Regiotram del Norte

48,9 km

will connect
Zipaquirá with
downtown
Bogotá

24.64 km in Bogotá

and

24.26 km in la Sabana

100% electrical system

We are environmentally friendly.

Estimated demand

More than **54 million** passengers
per year.

17 estaciones

11 in Bogotá, 1 in Chía, 3 in
Cajicá and 2 in Zipaquirá.



TransMilenio *a Soacha* Fases II y III

Estimated daily demand

400.000 passengers.

Phase II 1.3 km

Construction of

- Calle 22 vehicular bridge
- Two simple stations.
- One intermediate station

Phase III 2.6 km

Construction of

- El Vínculo (workshop)
- 7 pedestrian bridges
- Two simple stations



Gobernación de
Cundinamarca